

Full Function Scan Tool

Software Updates

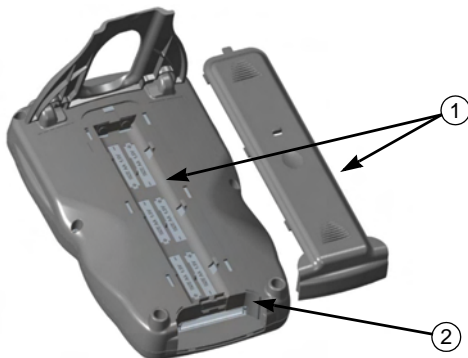
Use this document to:

- Install a new memory card into a full function scan tool (the memory card contains the tool's operating software and software applications)
- Authorize scan tool software applications

Install Memory Card

New software applications and software updates for the scan tool are provided on a Memory Card. You must first install the memory card and then authorize the applications. Use the following steps to install a Memory Card.

- 1 Use the **On / Off** button to turn the scan tool off.
- 2 Position the tool face down and remove the battery compartment cover from the back of the scan tool as shown below.



Item 1 Battery Compartment and Cover

Item 2 Memory Card Slot

Figure 1: Scan Tool Back View

- 3 Locate the Memory Card slot at the bottom of the battery compartment.

Note: If there is already a Memory Card in the slot, remove it before continuing.

- 4 Position the Memory Card with the pin connectors facing the tool and the MEMORY CARD label facing up, as shown below.



Figure 2: Memory Card Position

- 5 Insert the Memory Card into the slot.
- 6 Replace the battery compartment cover.
- 7 Supply battery or adapter power to the scan tool.
- 8 Press the **On / Off** button to turn the tool on. The scan tool beeps, starts the operating system, and then displays the Application Manager screen.



Figure 3: Typical Application Manager Screen

- 9 The Application Manager screen displays all of the software applications available for the scan tool. To authorize applications, refer to the next page.

Authorize Software Applications

For each software application you purchase, you receive a Security Card with a security code printed on it. You use this code, along with the scan tool serial number, to obtain an authorization code for the software application by internet, fax, or telephone. You then enter the authorization code into the scan tool to authorize the application.

Locate Scan Tool Serial Number

Use the following steps to locate the serial number.

- 1 Supply power to the scan tool (battery or adapter).
- 2 Press the **On / Off** button to turn the tool on.
Wait for the Application Manager screen to appear.

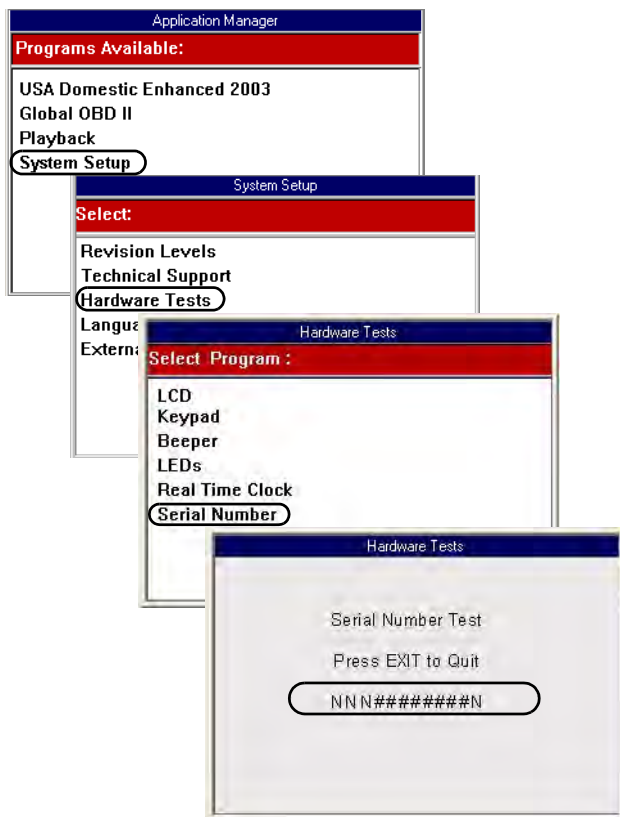


Figure 4: Application Manager, System Setup, and Hardware Tests Menu Screens

- 3 Select the following options from the menu screens, pressing the **ENTER** key after each selection:
System Setup, Hardware Tests, Serial Number.
- 4 Make note of the serial number. (See page 4.)
- 5 Use the **EXIT** key to return to previous screens.
- 6 Use the steps in the next section to obtain an authorization code.

Obtain Authorization Code(s)

After locating the scan tool serial number, use the following steps to obtain an authorization code for a scan tool software application.

- 1 Locate the security code on the Security Card that you received when purchasing the software application.

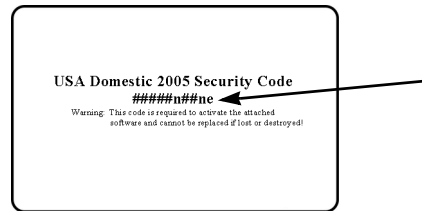


Figure 5: Security Code on Security Card

- 2 Do one of the following:
 - **Internet:** Connect a PC to the internet web site www.spxsecuritycode.com and follow the instructions provided. You will be asked to enter the scan tool serial number, name and address information, and software application security code. Print or make note of the authorization code that is provided. Repeat this procedure for each application you want to authorize.
 - **Telephone:** Call Technical Services at (USA) 800-533-6127, press 1 for Customer Service. You will be asked for name and address information, the scan tool serial number, and the software application security code for each application you want to authorize. Make note of the authorization code(s) you are given.
 - **Fax:** Send the following information by fax to (USA) 800-283-8665: name and address information, telephone number, scan tool serial number, and software application security code for each application you want to authorize. You will receive an authorization code by telephone or fax. (See the form on page 4.)
Note: *Enviar por Fax: al (33)3342 5544/45 desde Guadalajara, al 01 800-234-9729 llamada sin costo desde el interior de la República, al 52-33-3343-9729 desde Centro y Sudamérica, o al 1 877-573-3737 desde EUA.*

- 3 After you obtain the authorization code(s), use the steps in the next section to enter the authorization code(s) into the scan tool to authorize the application(s).

Enter Authorization Code(s) into Scan Tool

After obtaining an authorization code for a scan tool software application, use the following steps to enter the code into the scan tool to authorize the application.

Note: Each authorization code is specific to one scan tool and one application and will not work on any other tool or for any other application.

- 1 Display the Application Manager screen on the scan tool.

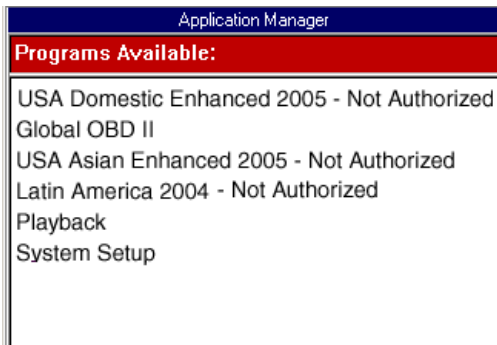


Figure 6: Typical Application Manager Screen

- 2 Select the **application to authorize** and press the **ENTER** key. This displays the Authorization Code Entry screen.

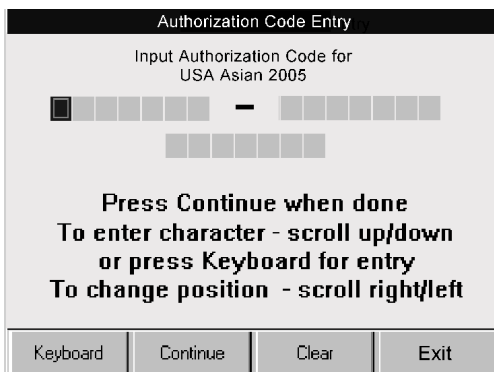


Figure 7: Authorization Code Entry Screen Example

- 3 Use the Authorization Code Entry screen to enter the authorization code as follows:
 - a Use the **Up** and **Down Direction (arrow)** keys to select a letter of the alphabet or a number from 0 to 9.
 - b Press the **Right Direction** key to move to the next box. (Use the **Left Direction** key to move backward.)
 - c Repeat a and b until the code is entered.

Note: To optionally clear all the boxes, press the **Clear** function key.

Note: To optionally use the Keyboard, press the **Keyboard** function key and use the following steps.



Figure 8: Keyboard Screen

Use the keyboard as follows:

- Use the **Direction** keys to select a letter or number and press the **ENTER** key to move to the next box.
 - To move backward, go to 0 and press the **Left Direction** key to get to the **BS**, back-space, key.)
 - To optionally clear all the boxes, press the **Clear** function key.
 - To optionally return to the normal display, press the **No Keyboard** function key.
- d When finished entering the authorization code, press the **Continue** function key. This displays the first Vehicle Identification screen.
- 4 Press the **EXIT** key to return to the Application Manager screen.
 - 5 Turn the scan tool off and back on to complete the authorization.
 - 6 Repeat the authorization code entry steps for each software application you need to authorize.

Request for Full Function Scan Tool Authorization Code

Send the following information by fax to (USA) 800-283-8665:

Date:	
Company Name:	
Address1:	
Address2:	
City:	
State\Province:	
Postal Code (zip):	
Contact Person:	
Telephone Number:	
Fax Number:	
E-mail Address:	
Scan Tool Serial Number:	
Security Code:	

The following will be completed and returned to you:

Authorization Code:	
Authorized By:	
Date:	