

READ THIS FIRST

IMPORTANT INSTALLATION INSTRUCTIONS

The recent release of System 2.0 for your Scan Tool brings important changes that provide high performance for new applications such as USA 2005 Domestic, USA 2005 Asian and InfoTech 2005. These applications require System 2.0 to deliver the increased speed and functionality and WILL NOT install without it. System 2.0 is available as a Starter Kit that includes System 2.0 software, a high-speed memory card, memory card cover, NGIS 5.0 CD, Card Reader and extension cable. System 2.0 and other software applications are pre-installed on the memory card for your convenience.

You may already have System 2.0? Read below to find out

What is System 2.0?

System 2.0 is a new software application **and** a high speed compact flash card that contain powerful features that improve the scan tools performance. System 2.0 is also a new fast USB update process. More detail on each component of System 2.0 below.

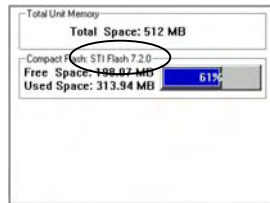
◆ **System 2.0 Software:**

System 2.0 is the core application that operates the scan tool. It is also a set of exclusive features, such as a new icon based user interface. Fast Boot gets you to the menu in 10 seconds on the new & improved tools. Once at the menu there are 4 new programmable function keys to launch applications you use every day. You are now one button press away from your most used applications. Just want to quickly pull codes? Global OBD II Scan Tool Mode does so in seconds.

There are two ways to determine if you have System 2.0 software. Does the opening screen show the large, red System 2.0 logo? Or, go to **System Setup > Revision Levels** and look through the list for System 2.0.

◆ **System 2.0 High-Speed Memory Card**

To achieve the performance necessary for System 2.0 a high-speed memory card is used. **ONLY** this card can be used. To determine if you have the card designed for System 2.0 **first** confirm the memory card is in the external memory card slot. Internal memory cannot be used. If you have an external memory card, go to **System Setup > Disk Usage**. The Memory Card description must read "STI Flash" as illustrated.



◆ **System 2.0 Installation**

System 2.0 can **ONLY** be installed using one of two methods. The primary method is the preloaded high-speed memory card contained in the System 2.0 Starter Kit. The secondary method is a USB Card Reader. The Card Reader uses Windows based update software contained on the NGIS 5.0 CD to program the memory card. The CD includes the Scan tool and Solarity update software, System 2.0, all necessary software applications, operation manuals, Remote Display and ConnectTech.



High Speed



USB Card



NGIS 5.0 CD