



## Overview of TPMS TPR Application Release

This TPMS update is a significant improvement to the TPMS in terms of content and usability, and includes:

- Greatly simplified user interface for “Tire Pressure Sensor Registration” tests under “TPMS TPR” applications. This user interface was implemented across Asian, Domestic and European OEMs (ALL years), unifying and simplifying the user experience.
- Added a new Web Update feature for the TPR Tool, allowing both easy and more frequent firmware updates for the TPR, independent of Genisys\TPMS Reader releases.
- In this release we added an encompassing overall revision level to Genisys and TPMS Reader “Revision Levels “screen.
- Added TPMS/TPR update for all previously released Domestic and Asian 2010 TPMS Systems.
- Simplified the vehicle selection list for GM and Saturn. Specifically, we now only have controllers listed that contain the core TPMS data/functionality. Extraneous ECU selections have been removed with this update, making it less confusing for the user.
- Added new TPMS\TPR Systems for European OEMs.
- Added for the first time “Tire Pressure Sensor Registration” support for both Hyundai and Kia
- Added for the first time “Tire Pressure Sensor Registration” support for Ford (Instructions on manual process).
- Added for the first Time BMW and Mini TPMS ECU Support. Note: No other aftermarket tool found with this level of BMW TPMS support.
- Added for the first time “Tire Pressure Sensor Registration” support for Mercedes Benz. In addition, 2009 and 2010 Support for TPMS coverage for Mercedes Benz, improved previous years TPMS support by adding additional coverage for 2008 and adding a new protocol support (UDS) covering new TPMS ECUs from 2006 to 2010.
- Added for the first time “Tire Pressure Sensor Registration” test support for Volvo. In addition, 2009 and 2010 Support for TPMS coverage for Volvo, greatly improved

(added support for default DPN) to all previous years 1999-2005. Added new protocol support for Volvo (GGD) which covers 04-10 year range TPMS ECU's.

- Added 2009 and 2010 Volkswagen TPMS ECU's.

## Revision Levels for this Release

Below are the revision levels on each tool for this release.

### *Genisys Revision Level*

4.0.1112.1

### *TPMS Scan Revision Level*

2.0.1112.1

## TPMS Kits

TPMS\TPR Updates are on the following kits:

Genisys



TPMS/TPR Scan





## Vehicle Coverage

### *Vehicle Coverage Overview*

- Added coverage through 2010 for all supported manufacturers.
- Added new coverage for BMW, Mercedes, Mini and Volvo.
- Added coverage for 107 new systems.
- Added coverage for 1,048 new vehicle-ECU combinations
- Added 52 new Tire Pressure Sensor Registration tests.

### *Audi Coverage*

- Coverage updated through 2010 model year.
- 170 new vehicle-ECU combinations.
- See “TPMS TPR Coverage by Year all OEM’s” for specific make, model, computer and year.

### *BMW Coverage*

- Added for the first Time TPMS ECU Support.
- Coverage updated through 2010 model year.
- 14 new systems covered.
- 301 new vehicle-ECU combinations.
- Note: Note: No other aftermarket tool found with this level of BMW TPMS support.
- See “TPMS TPR Coverage by Year all OEM’s” for specific make, model, computer and year.

### *Chrysler/Jeep Coverage*

- Coverage updated through 2010 model year.
- 5 new systems covered.
- 144 new vehicle-ECU combinations.
- Added 6 new Tire Pressure Sensor Registration tests\
- See “TPMS TPR Coverage by Year all OEM’s” for specific make, model, computer and year.

### *Ford Coverage*

- Coverage updated through 2010 model year.
- 10 new systems covered.
- 82 new vehicle-ECU combinations.
- Added 4 new Tire Pressure Sensor Registration tests



Release Notes Version

- Added for the first time “Tire Pressure Sensor Registration” support (Instructions on manual process).
- See “TPMS TPR Coverage by Year all OEM’s” for specific make, model, computer and year.

**GM/Saturn Coverage**

- Coverage updated through 2010 model year.
- 34 new systems covered.
- 175 new vehicle-ECU combinations.
- Added 13 new Tire Pressure Sensor Registration tests
- Simplified the vehicle selection list for GM and Saturn. Specifically, we now only have controllers listed that contain the core TPMS data/functionality. Extraneous ECU selections have been removed with this update, making it less confusing for the user.
- See “TPMS TPR Coverage by Year all OEM’s” for specific make, model, computer and year.

**Honda Coverage**

- Coverage updated through 2010 model year.
- 1 new system covered.
- 2 new vehicle-ECU combinations.
- Added 4 new Tire Pressure Sensor Registration tests
- See “TPMS TPR Coverage by Year all OEM’s” for specific make, model, computer and year.

**Hyundai Coverage**

- Coverage updated through 2010 model year.
- 6 new systems covered.
- 19 new vehicle-ECU combinations.
- Added 1 new Tire Pressure Sensor Registration test
- Added for the first time “Tire Pressure Sensor Registration” support.
- See “TPMS TPR Coverage by Year all OEM’s” for specific make, model, computer and year.

**Kia Coverage**

- Coverage updated through 2010 model year.
- 5 new systems covered.
- 18 new vehicle-ECU combinations.



- Added 1 new Tire Pressure Sensor Registration test.
- Added for the first time “Tire Pressure Sensor Registration” support.
- See “TPMS TPR Coverage by Year all OEM’s” for specific make, model, computer and year.

### ***Mazda Coverage***

- Coverage updated through 2010 model year.
- 2 new systems covered.
- 3 new vehicle-ECU combinations.
- Added 2 new Tire Pressure Sensor Registration tests
- See “TPMS TPR Coverage by Year all OEM’s” for specific make, model, computer and year.

### ***Mercedes Coverage***

- Coverage updated through 2010 model year.
- 8 new systems covered.
- 165 new vehicle-ECU combinations.
- Improved previous years TPMS support by adding additional coverage for 2008 and adding a new protocol support (UDS) covering new TPMS ECUs from 2006 to 2010.
- Added for the first time “Tire Pressure Sensor Registration” support.
- Added 2 new Tire Pressure Sensor Registration tests.
- See “TPMS TPR Coverage by Year all OEM’s” for specific make, model, computer and year.

### ***Mini Coverage***

- Added for the first Time TPMS ECU Support.
- Coverage updated through 2010 model year.
- 7 new systems covered.
- 35 new vehicle-ECU combinations.
- See “TPMS TPR Coverage by Year all OEM’s” for specific make, model, computer and year.

### ***Mitsubishi Coverage***

- Coverage updated through 2010 model year.
- 2 new systems covered.
- 22 new vehicle-ECU combinations.
- Added 3 new Tire Pressure Sensor Registration test



- See “TPMS TPR Coverage by Year all OEM’s” for specific make, model, computer and year.

### ***Nissan Coverage***

- Coverage updated through 2010 model year.
- 3 new systems covered.
- 11 new vehicle-ECU combinations.
- Added 1 new Tire Pressure Sensor Registration test
- See “TPMS TPR Coverage by Year all OEM’s” for specific make, model, computer and year.

### ***Toyota Coverage***

- Coverage updated through 2010 model year.
- 2 new systems covered.
- 10 new vehicle-ECU combinations.
- Added 2 new Tire Pressure Sensor Registration tests
- See “TPMS TPR Coverage by Year all OEM’s” for specific make, model, computer and year.

### ***Volkswagen Coverage***

- Coverage updated through 2010 model year.
- 108 new vehicle-ECU combinations.
- See “TPMS TPR Coverage by Year all OEM’s” for specific make, model, computer and year.

### ***Volvo Coverage***

- Coverage added through 2010 model year.
- 8 new systems covered.
- 61 new vehicle-ECU combinations.
- Added 1 new Tire Pressure Sensor Registration test’
- Added 2009 and 2010 Support for TPMS coverage for Volvo, greatly improved (added support for default DPN) to all previous years 1999-2005. Note: 2006-2008 was the first year we added support for default DPN, so now we have added this enhanced support for all years.
- Added new protocol support for Volvo (GGD) which covers 04-10 year range TPMS ECU’s.
- Also added first time “Tire Pressure Sensor Registration” test support for Volvo.
- See “TPMS TPR Coverage by Year all OEM’s” for specific make, model, computer and year.



## Unified and Simplified User Interface

### **Overview**

The user interface was greatly simplified for “Tire Pressure Sensor Registration” tests under “TPMS TPR” applications. This user interface was implemented across Asian, Domestic and European OEMs (ALL years), unifying and simplifying the user interface experience.

### ***OEM's with Unified Sensor Registration Flow***

The simple unified flow fits all of the following OEM's:

**Nissan**

**Hyundai**

**Kia**

**Chrysler**

**Dodge**

**Jeep**

**Honda**

**Toyota**

**Volvo**

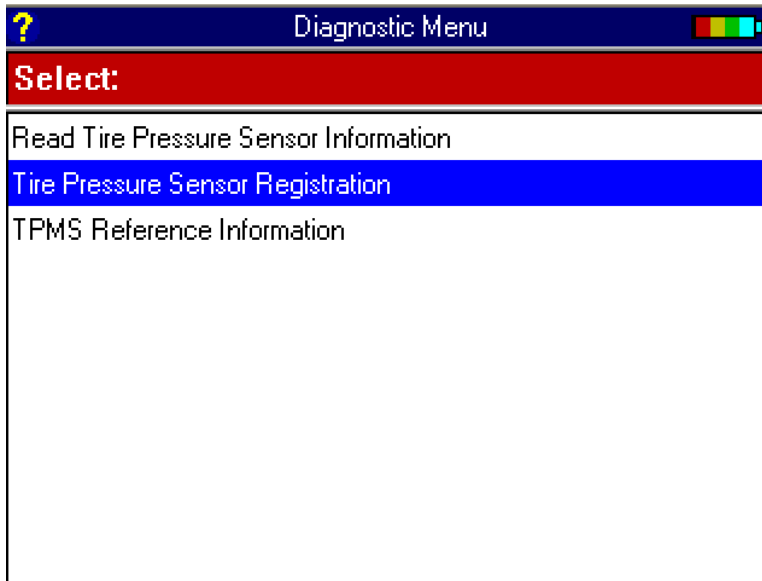
**Mercedes**



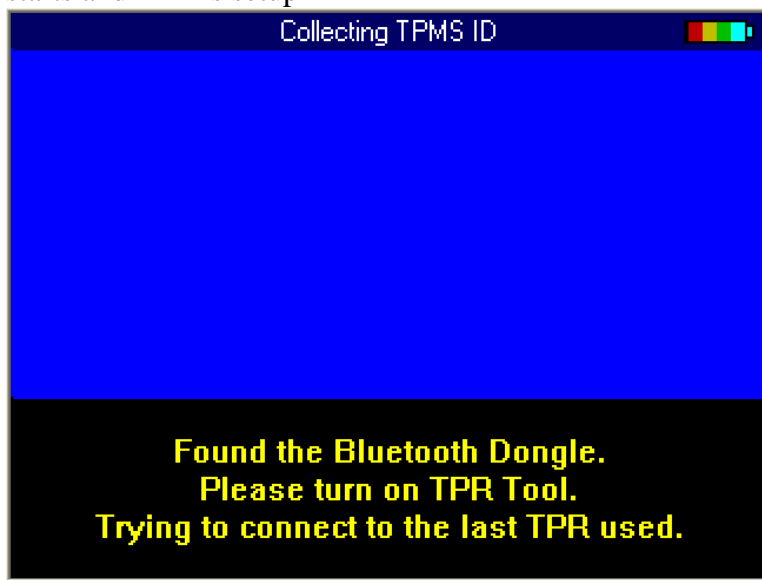
Release Notes Version

### Unified Sensor Registration Flow

Screen 1: Special tests are now in the diagnostic menu in the below order (Any other Special Tests, if present, will be below these in the same menu).



Screen 2: Once the Tire Pressure Sensor Registration test is selected, Bluetooth communication starts and TPR is setup



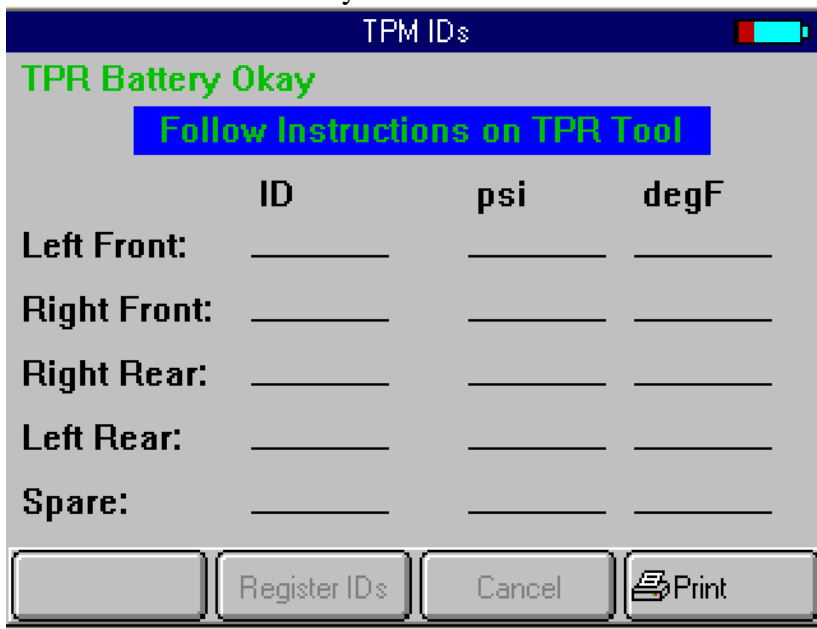


Release Notes Version

Screen 3: The TPR is setup with the vehicle selection information via the Bluetooth and is ready to activate sensors.



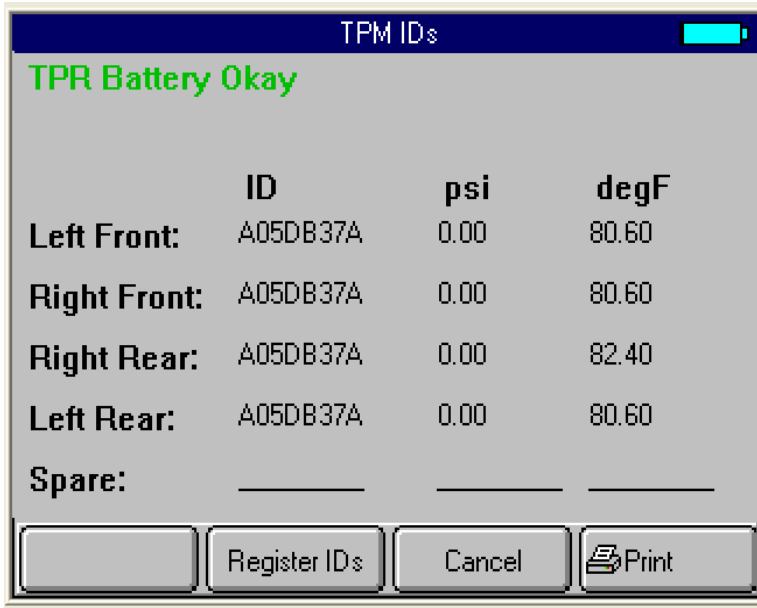
Screen 4: This is the corresponding screen on Genisys when the TPR is ready. The “Register IDs” button is enabled only when at least 4 sensors are read.





Release Notes Version

Screen 5: All 4 sensors are read and TPR goes to “Process Complete”. At this time, the “Register IDs” button is enabled.



Screen 6: Upon hitting “Register IDs” button, the sensors are registered and the Tires Registered screen is displayed.



Note: The final screen on Honda is different since specific advice is provided to drive the vehicle after registration.



## ***Additional Sensor Registration Flows***

Due to the method used by some OEM's the vehicle TPMS sensor registration process flow can be done via a simple but more manual flow. These specific registration processes are typically not found on other tools.

### **GM/Saturn**

GM vehicles don't write the IDs through the DLC, but the Genisys places the vehicles into learn mode through a DLC command and then activate the sensors, and use Horn beeps to indicate success or failure.

A new very simple process flow to cover these vehicles and this flow allows Genisys to sync up with the TPR Tool and have the vehicle automatically selected on the TPR via Genisys Bluetooth.

### **Ford**

Ford vehicles use a variety of manual actions to go into learn mode. The Genisys test contains these very specific instructions to put the vehicle into learn mode and also sets up the TPR with the vehicle selection information.

### **Mitsubishi**

Mitsubishi flow is simple but as a request is sent to the vehicle after every tire sensor is activated the flow is different than the unified flow.



Release Notes Version

**TPMS Release Free for Asian/Domestic 2010**

This TPMS 2010 release is being offered free to users with Asian / Domestic 2010. Users with Asian Domestic 2009 and before cannot obtain this update without acquiring Asian Domestic 2010.

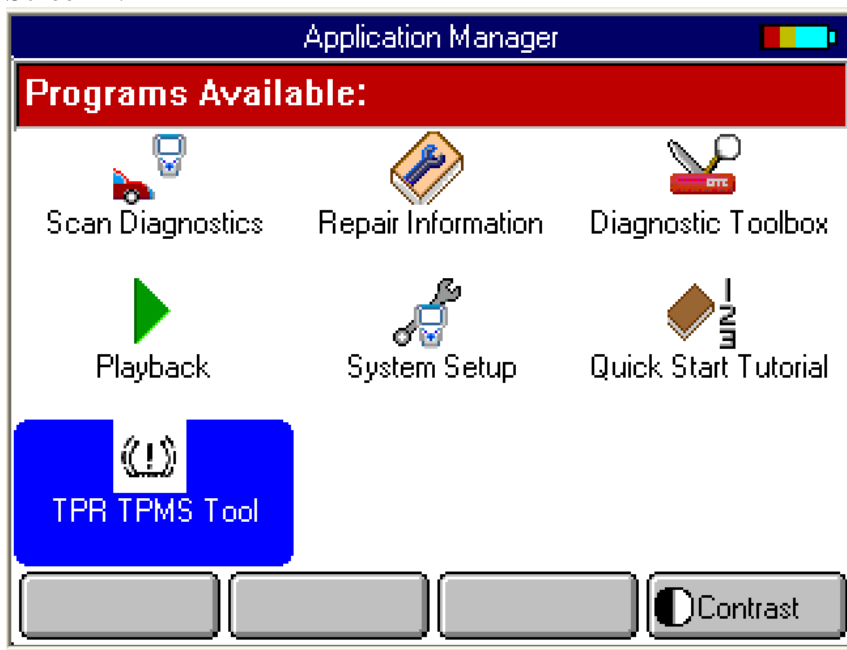
**TPR Tool Web Update**

Added a new Web Update feature for the TPR Tool, allowing both easy and more frequent firmware updates for the TPR, independent of Genisys\TPMS Scan releases.

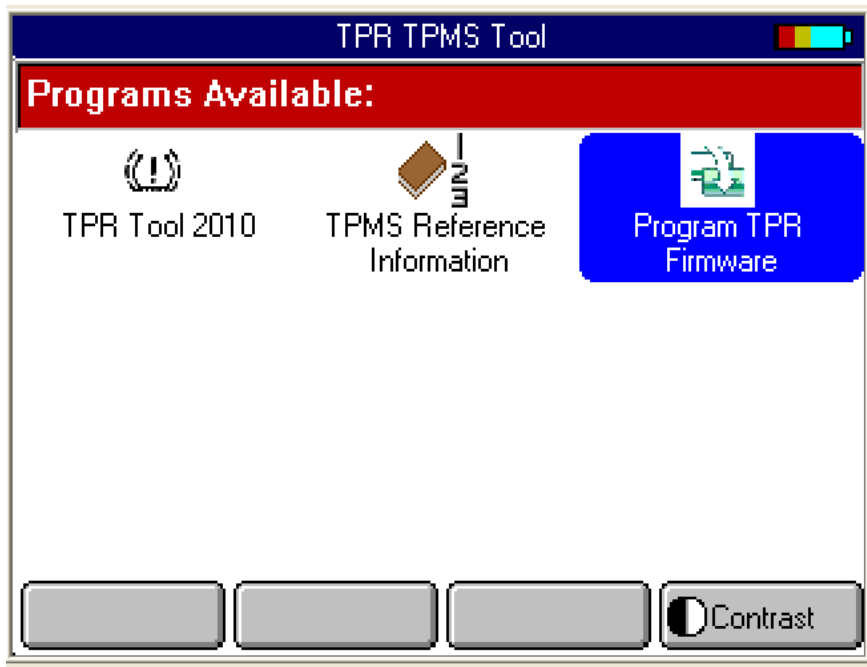
**TECH/FORCE Update Screens**

The TPR Tool is no longer updated via Genisys. This section screen flow shows how Genisys now points the user to use the specific website to update the TPR tool. To be consistent across releases we left these instructions in the same menu where they have always been, except now they simply refer the user to the web site instead of actually updating the TPR firmware directly from Genisys.

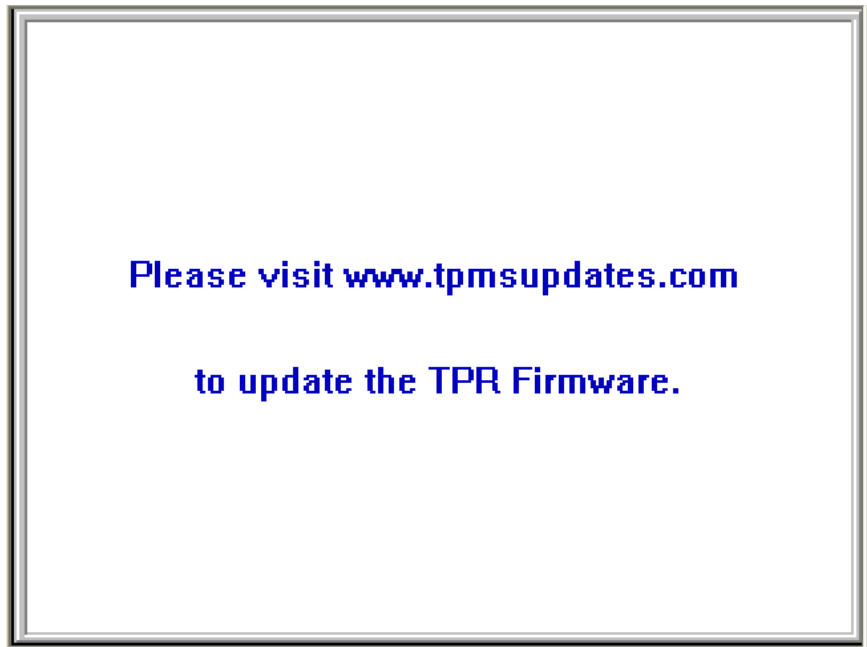
Screen 1:



Screen 2:



Screen 3:



On hitting 'ENTER', we go back to Screen 2



## Special Notes

### Overall Revision Level

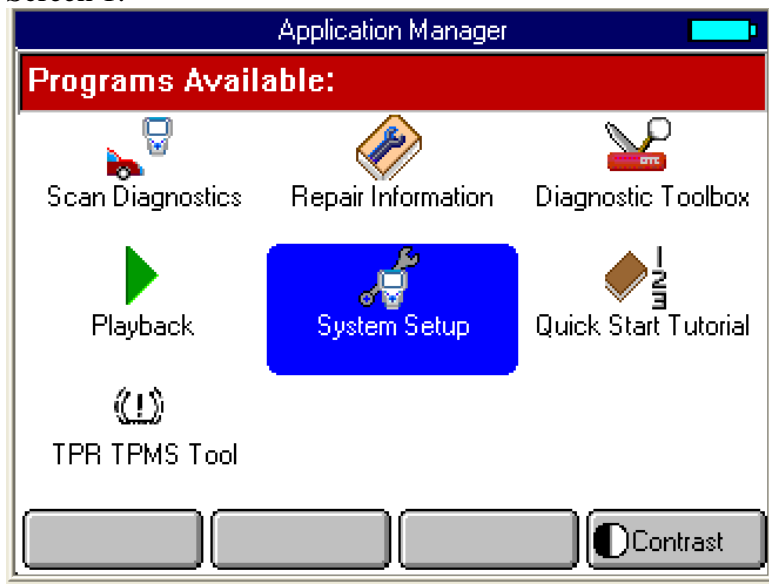
#### Overview

In this release we added an encompassing overall revision level to Genisys and TPMS Scan. This provides the user to view just one revision level to determine if an update is required.

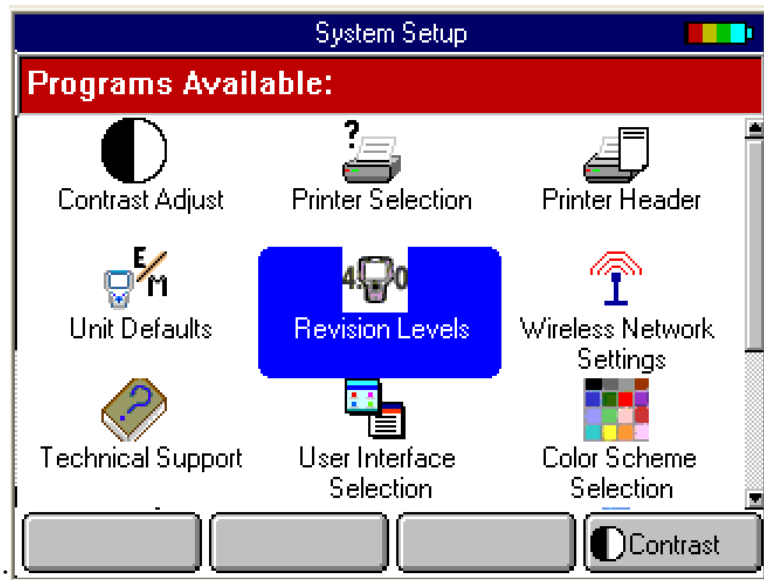
#### Revision Level Screen

On your Genisys tool find the Revision Level Screen as follows (follow the same example on TPMS Scan).

Screen 1:



Screen 2



Screen 3:

Overall version is at the top of the screen. In this release the version is 4.0.1112.1

Software Revisions 4.0.1112.1	
Software	Revision Levels
System	04.00
Gas M-P	01.70
ConnecTech PC Software	01.87
Scope with InfoTech 2006	04.02
Heavy-Duty Standard	01.03
USA 2010 Domestic	01.00
USA 2010 Asian	01.00
USA 2008 European	01.00
Repair-Trac 2010	01.00
Fast Fix	01.00
Volkswagen	01.00